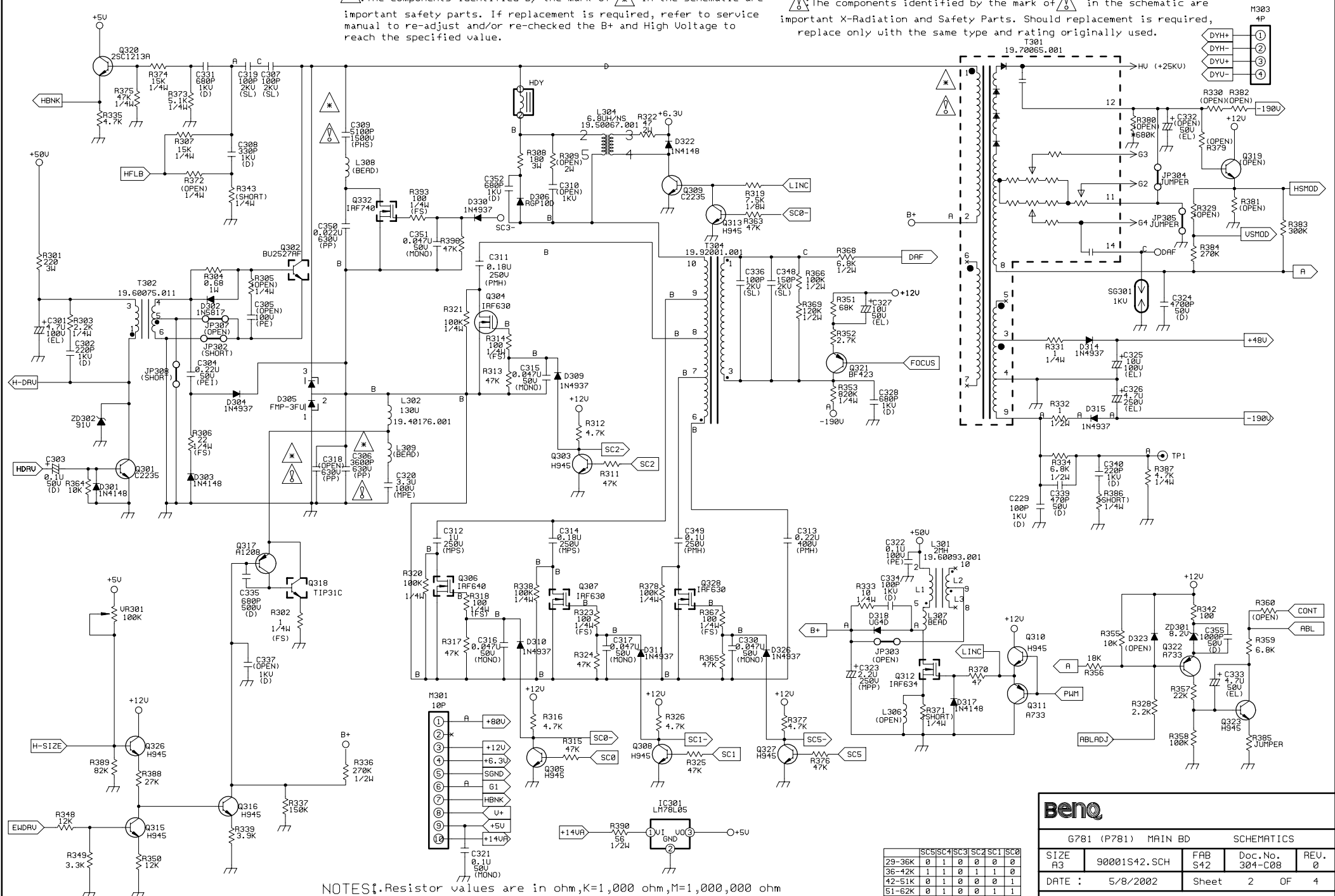
				
G781 (P781) MAIN BD			SCHEMATICS	
SIZE A4	90001S42.SCH	FAB S42	Doc.No. 304-C08	REV. 0
DATE : 5/8/2002		Sheet	1	OF 4
Project Code. 99.90071.001				
Prepared By		Reviewed By	Approved By	
ANGEL HU 5/8/2002		RICHARD WU 5/8/2002	TONY CHANG 5/8/2002	

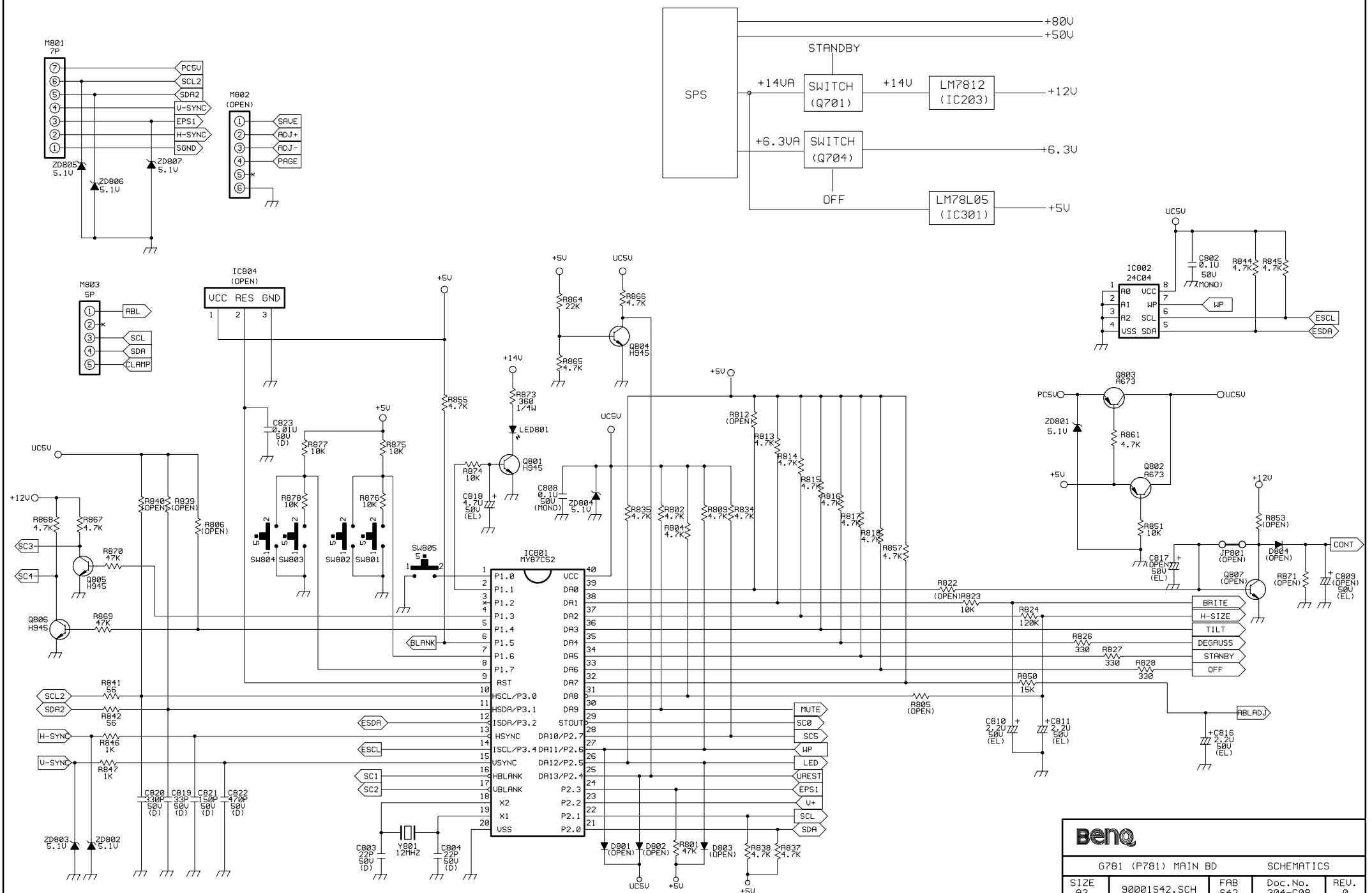
⚠:The components identified by the mark of ⚠ in the schematic are important safety parts. If replacement is required, refer to service manual to re-adjust and/or re-checked the B+ and High Voltage to reach the specified value.

⚠:The components identified by the mark of ⚠ in the schematic are important X-Radiation and Safety Parts. Should replacement is required, replace only with the same type and rating originally used.



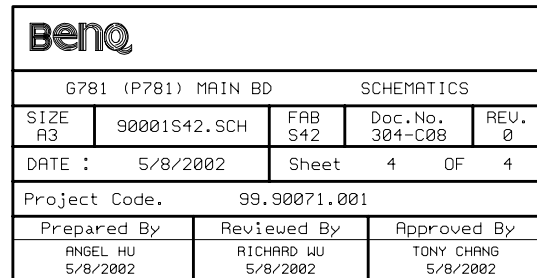
NOTES: 1. Resistor values are in ohm, K=1,000 ohm, M=1,000,000 ohm  
2. All resistors are 1/8 watt, 5% except where otherwise indicated  
3.  $\perp$   $\nabla$   $\equiv$  Represents PCB common ground.

Benq			
G781 (P781) MAIN BD		SCHEMATICS	
SIZE	90001S42.SCH	FAB	Doc.No.
A3		S42	304-C08
DATE :	5/8/2002	Sheet	2 OF 4
Project Code.		99.90071.001	
Prepared By		Reviewed By	
ANGEL HU		RICHARD WU	
5/8/2002		Approved By	
		TONY CHANG	
		5/8/2002	



NOTES: 1. Resistor values are in ohm, K=1,000 ohm, M=1,000,000 ohm  
 2. All resistors are 1/8 watt, 5% except where otherwise indicated  
 3.  $\nabla$   $\nabla$   $\nabla$  Represents PCB common ground.

BenQ				
G781 (P781) MAIN BD			SCHEMATICS	
SIZE A3	90001S42.SCH	FAB S42	Doc.No. 304-C08	REV. 0
DATE :	5/8/2002	Sheet	3	OF 4
Project Code. 99.90071.001				
Prepared By ANGEL HU 5/8/2002	Reviewed By RICHARD HU 5/8/2002	Approved By TONY CHANG 5/8/2002		



**⚠**: The components identified by the mark of **⚠** in the schematic are important safety parts. If replacement is required, refer to service manual to re-adjust and/or re-checked the B+ and High Voltage to reach the specified value.

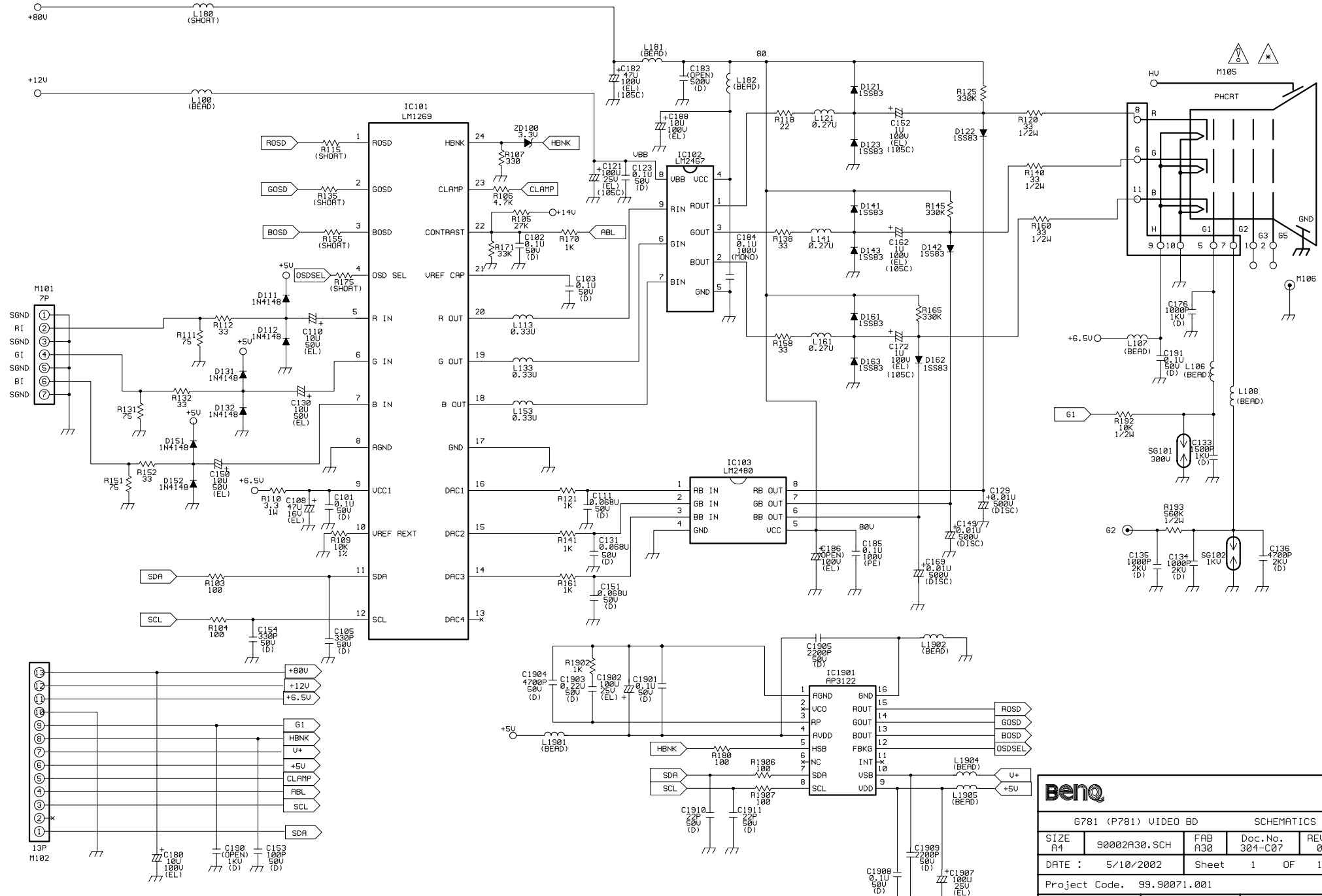
T601, R734, R735, UR701.

△: The components identified by the mark of △ in the schematic are important safety parts. If replacement is required, refer to service manual to re-adjust and/or re-checked the B+ and High Voltage to reach the specified value.

⚠: The components identified by the mark of ⚠ in the schematic are important X-Radiation and Safety Parts. Should replacement is required, replace only with the same type and rating originally used.

## NOTES:

1. Resistor Values are in ohm, k=1,000ohm, M=1,000,000ohm
2. All resistors are 1/8W, 5% except where otherwise indicated
3.  $\nabla \nabla \nabla$   $\nabla$   $\pm$  Represents PCB common ground.



BenQ			
7781 (P781) VIDEO BD SCHEMATICS			
SIZE	FAB	Doc.No.	REV.
A4	90002A30.SCH	A30	304-C07
DATE :	5/10/2002	Sheet	1 OF 1
Project Code. 99.90071.001			
Prepared By	Reviewed By	Approved By	
ANSEL HU	RICHARD HU	TONY CHANG	
5/10/2002	5/10/2002	5/10/2002	

△: The components identified by the mark of △ in the schematic are important safety parts. If replacement is required, refer to service manual to re-adjust and/or re-checked the B+ and High Voltage to reach the specified value.

⚠: The components identified by the mark of ⚠ in the schematic are important X-Radiation and Safety Parts. Should replacement is required, replace only with the same type and rating originally used.

## NOTES:

1. Resistor Values are in ohm, k=1,000ohm, M=1,000,000ohm
2. All resistors are 1/8W, 5% except where otherwise indicated
3.  $\nabla \nabla \nabla$   $\nabla$   $\pm$  Represents PCB common ground.

