

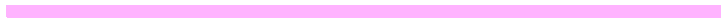
SIEMENS

SyncStation User Guide

English



— | 17.03.00 SyncStationIVZ. IC35 Deutsch, | —



— | | —

Table of Contents

Sync Station

User Guide 1

IC35 Sync 4

Software installation 4

Connection between PC and

IC35 via SyncStation 4

Starting the IC35 Sync software

5

IC35 Sync 6

Additional connection options

between PC and IC35 6

WAP

User Guide 7

Starting/exiting the browser 8

Connecting to the phone 8

Starting 8

Connecting 8

Ending a connection 8

Exiting 8

Configuring the Service Provider 9

Profiles 9

Creating profiles 9

Navigating in WAP pages 11

Window structure 11

Links 11

Texts/graphics 11

Footer 11

Input fields 11

Menu 12

Browser 12

Navigate 12

History 13

Bookmarks 13

? (Software version) 13

Appendix 14

Quick selection and

key combinations 14

Index 15

IC35 Sync

IC35 Sync software

The IC35 Sync software is a desktop program for the user-friendly synchronisation of your IC35 data with MS Outlook and Lotus Organizer. This software ensures that the same up-to-date data is always available on both your IC35 and your PC applications.

Operation is very easy. All it takes is a mouse click to import, export and synchronise data.

Software installation

The installation software can be found on the CD-ROM supplied. To install the IC35 Sync software, double-click the file:

Setup.exe

Then follow the instructions issued by the installation program.

Connection between PC and IC35 via SyncStation

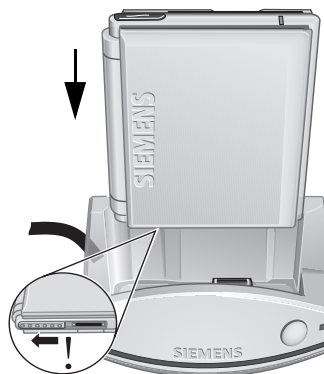
Connecting SyncStation to PC

Connect the SyncStation cable at the PC to a COM port (COM 1 to COM 4).

Make sure that the station is placed on a non-slip surface.

Connection between IC35 and SyncStation

Slide back the panel in front of the port on IC35 before plugging in the cable. Insert the IC35 in SyncStation.



Initialise SyncStation by pressing the button on the front of the SyncStation. A green LED lights up on the IC35 when initialisation is successful.

Data can also be exchanged between the IC35 and the PC without SyncStation. To do this, see "Additional connection options between PC and IC35", page 6.

IC35 Sync

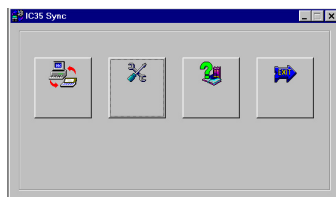
5

Starting the IC35 Sync software

If a connection has been set up between the IC35 and the PC, double-click the IC35 Sync icon on the Windows desktop and start the software:



The following options appear:



Configuration

Click the Configuration icon.



A window containing four areas opens. These areas can be activated with a mouse click for the purpose of data exchange. An active area is indicated by a tick.

Options

You can select the PC program that you want to use on your PC in the "Options" window. You decide whether data is to be imported, exported or synchronised.

Assignment of options:

SIEMENS IC35	MS Outlook	Lotus Organizer
Schedule	Calendar	Calendar
Address Book	Contacts	Contacts
Note Pad	Warnings	Note Pad
To Do List	Tasks	To Do List

Lotus Organizer and MS Outlook are registered trademarks.

Communication

- Set the communication methods used:
SyncStation, IrDA (IrDA connection, siehe Seite 6)
- Select the port used (COM1 to COM4).

Advanced settings

You can mark the following setting here.

Confirmations:

A prompt should appear before modifications and deletion of records. Both are recommended.

Conflicts:

Instructions as to how to deal with problems when conflicts arise in the case of data modifications between IC35 and MS Outlook or Lotus Organizer.

IC35 Sync

Help



The help function is available should you encounter problems. This function provides you with a list of various help topics.

Synchronisation



Start the synchronisation operation once all settings have been correctly made. Data exchange animation indicates that the operation is in progress.

Close



Exit IC35 Sync.

Do not forget to remove the IC35 from SyncStation when synchronisation has been successfully completed. Otherwise the batteries of your IC35 will be depleted.

Additional connection options between PC and IC35

Connection via infrared port (IrDA)

Switch on the IC35.



Press and select Applications followed by IC35-Sync.



Select IC35 synchronisation via IrDA



Confirm.

A window entitled "Synchronisation" appears.

The IC35 synchronisation via IrDA window reappears once synchronisation has been completed.

The prerequisite for data transfer with IrDA is a PC or laptop with an operational IrDA port (SIR standard).

For transmission via IrDA, the distance between the units should be between 5 cm and 35 cm.

When synchronising, the transmission speed via IrDA is 19.2 kbps

SIEMENS

WAP User Guide

English



Starting/exiting the browser

Connecting to the phone

There are two methods of connecting IC35 to a mobile phone:

- Via a cable supplied as an accessory to IC35.
(see also the chapter on accessories in the IC 35 user guide)
- Via an IrDA interface. The IrDA interface must be switched on at the mobile phone.

First select your mobile phone model in the IC35 :

MENU Select the Settings menu item

Telephone type Select.

For more information on the configuration and use of these interfaces, refer to the user guides provided with your mobile phone and IC35.

Starting

MENU Select the Application menu item.

W@p Browser Select.

Enter Confirm.

Connecting

Before setting up a connection you should select a service provider (Profiles) for access to the WAP:

MENU Select the Browser menu item.

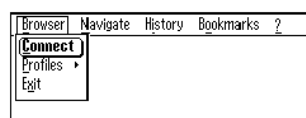
Profiles Select.

The profile currently active is identified by an *. To activate another profile, select it and confirm with OK. (siehe auch "Creating profiles" auf Seite 9)

To set up a connection:

MENU Select the Browser menu item.

Connect Select.



Ending a connection

To clear down an existing connection:

MENU Select the Browser menu item.

End connection select.

or press: **FN** + C

Exiting

MENU Select the Browser menu item.

Exit Select.

or press: **FN** + X.

Configuring the Service Provider


9

Profiles

A profile contains access information and configurations of the service provider. IC35 allows you to save three profiles simultaneously, one of which is active. For more information please refer to your service provider.

You can also find more information under:
<http://www.siemens.com/ic35>.

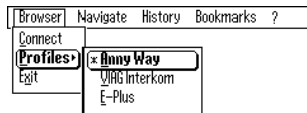
Creating profiles

 Select the **Browser** menu item.

Profiles Select.

 Press.

You can select one of the three profiles in the following submenu.



 Press.

The configuration menu opens.

Configuring a profile

The following settings can be made in the configuration.

Name of slot

Enter a name for the profile you defined. This name will appear in the profile selection box and during the connection.

Start page

Enter the URL of the page you want to use as the start page. This page is always opened as soon as you set up a connection or select the start page menu item.



Modem init string

Special AT commands for initialising your mobile phone can be entered here.

Bearer type

You can choose between two types: **CSD** (Circuit Switched Data) and **SMS** (Short Message Services).

Select the field bearer type:

 or .

configuration 1

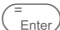
name of slot: Amny Way

bearer type: **CSD**



start page: <http://wap.amnyway.com>

modem init string:

OK Cancel

 Press. **CSD** and **SMS** appear.

Make your selection with:

 or .

 Confirm selection.

2 x  Press.

The configuration menu for CSD or SMS opens.

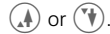
Configuring the Service provider

CSD configuration

The CSD bearer type is more widespread than SMS. If in doubt, consult your service provider.

csl settings:
IP of WAP gateway: 139.2.72.21
port number: 9200
number to dial: ATDT004923155581
session type: temporary
login: anyway
password: xxxxxx
 Cancel

Make your selection with:



IP of WAP gateway

IP address of the desired gateway.

Port number

The port number can be changed here (subject to explicit instructions by access provider).

Number to dial

Number (with prefix) of your access provider. This includes the modem control sequence ATDT (see also diagram above).

Session type

There are four session or connection types to choose from.

Enter the connection type required by the service provider.

session type:
☐ temporary
☐ continuous
☒ temporary secure
☐ continuous secure
 Cancel

Login

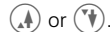
Enter the user ID (login) provided by your service provider.

Password

Enter the password associated with your login.

Saving configuration

Make your selection with:



OK


Confirm. The last profile configured is active.

Navigating in WAP pages

11

Window structure

This is the actual browser field which contains links, texts, graphics, selection boxes and/or input fields.

 WAP	Name of WAP page
Stock exchange Sport Weather Travel	
Footer: current status of the page	

Links



Navigate through the WAP page links provided.



Select the **marked** link.

Texts/graphics



Scroll through long texts or to the next page.

Footer



This key combination brings you to the footer menu items or returns you to the browser window. You can change the menu items with the arrow keys. If an arrow pointing upwards appears in the lower right-hand corner of the footer, additional menu items that could not be ac-


commodated in the footer are displayed under **Navigate** in the header.

Browser	Navigate	History	Bookmarks	?
Home Siemens-Yahoo Back Knopf6 Stop Reload Goto URL ... Show URL ...				
Knopf1	Knopf2	Knopf3	Knopf4	Knopf5

Input fields

Text input field

You can use the text input field to enter a security identification code for example.

 WAP	Title
<input type="text"/>	



Press to select.

Make an entry in the new window.



Confirm an input in a field.

Depending on the WML text, some input fields may not be left blank. In this case, press ...



... to cancel.

Selection box

There are selection boxes for single and multiple selection.



To open a selection box, select the square brackets.



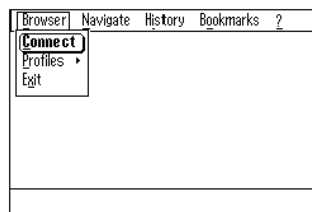
Make your selection.



Confirm.

Menu

Browser



Connect/End connection

You can use this option to set up or clear down connections.

Press: (FN) + C.

Profiles

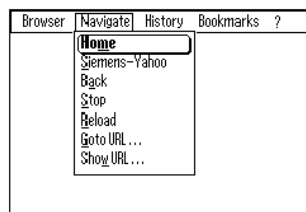
This function is used to configure profiles (siehe Seite 9).

Exit

Select this option to exit the browser.

Press: (FN) + X.

Navigate



Home

The Home menu item allows you to revert from the current page to the start page defined in the profile.

Press: (FN) + H.

Siemens-Yahoo

This menu item automatically opens the Yahoo service pages.

Press: (FN) + Y.

Back

Back enables you to reload the previous WAP pages without having to re-enter the URL. This option is only available for up to 10 pages.

Press: (FN) + (Del).

Menu

13

Stop

This option allows you to stop loading a new page. You remain on the page where you initiated the load operation.

Press: **(ESC)**.

Reload

You can use this option if you want to reload the current page.

Press: **(FN) + R**.

Show URL...

Shows the WAP address of the current page.

Press: **(FN) + U**.

Goto URL...

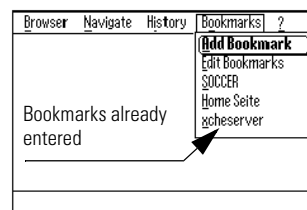
You can select WAP pages directly. Enter the desired address only. The browser automatically inserts the prefix HTTP://.

Press: **(FN) + L**.

History

The history contains a list of the WAP addresses of the last 10 pages loaded. These pages can be reloaded directly from this list.

Bookmarks



Bookmarks save a WAP address under a short name which can be accessed later. Short names can contain up to 13 characters.

Add Bookmark

This option can be used to set bookmarks in which the last page loaded will be saved. Bookmarks can also be edited later and assigned to another WAP address.

Press: **(FN) + D**.

Edit Bookmarks

This function allows you to edit bookmarks. They can be renamed, deleted or modified.

Press: **(FN) + B**.




















? (Software version)

Indicates the version number of the program.

Appendix

Quick selection and key combinations

You can speed up menu selection considerably by using specific key combinations. The following list provides an overview of all key combinations:

Function	Key combination
Reload	 + R
Exit	 + X
Footer	 + 
Goto URL...	 + L
Edit Bookmarks	 + D
Add Bookmark	 + B
Page up	 + 
Page down	 + 
Siemens-Yahoo	 + Y
Home	 + H
Stop	
Connect	 + C
End connection	 + C
Show URL...	 + U
Back	 + 

Index

B

Bearer type 9

C

Connection

 PC and IC35 4

CSD 9

CSD configuration 10

I

IC35 Sync, activating 5

Infrared (IrDA) 6

Installation 4

L

Lotus Organizer 5

M

Modem init string 9

MS Outlook 5

P

Profiles 9

S

Service provider 9

Setup 4

SMS 9

Start page 9

SyncStation 4