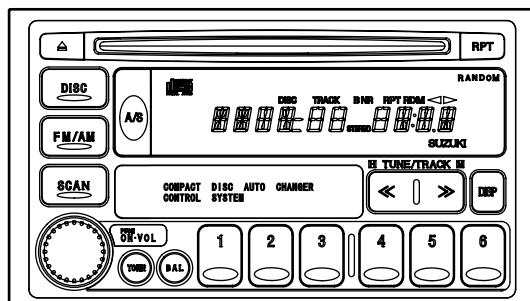


Service Manual



SUZUKI Automobile Genuine
AM/FM Stereo CD Deck

Model **PS-2429D**
(Genuine No.39101-65DE0-000)

ORIGINAL SERVICE MANUAL

This additional service manual is designed to be used together with service manual of PS-2375D,I/PS-2376D,I/PS-2377D,I.

Original model	Manual No.
PS-2375D,I	298-5854-00
PS-2376D,I	
PS-2377D,I	

SPECIFICATIONS

Radio section

Tuning system: PLL Frequency synthesizer system
Receive range: AM 530kHz to 1,710kHz
FM 87.75MHz to 107.9MHz

Intermediate frequency:

AM 450 ± 3kHz
FM 10.7 ± 0.2MHz

Quieting sensitivity:

AM Less than 34dB μ
(at 20dB S/N)
FM Less than 15dB μ
(at 30dB S/N)

Separation:

FM More than 20dB(at 1kHz)

Auto tuning stop sensitivity:

AM 32 ± 6dB μ
FM 26 ± 6dB μ

CD section

Disc: Compact disc(8cm/12cm)
Separation: More than 50dB
S/N ratio: More than 60dB
Distortion: Less than 1.0%(at 20kHz LPF)

General

Load impedance: 4
Power output: 16W × 4(MAX)

Power supply voltage: DC13.2V(10.8V to 15.6V)

Negative ground

Back-up consumption: Less than 4mA

Dimensions(mm): 186(W) × 106(H) × 156.5(D)

Weight: 2.13kg

Specifications and design are subject to change without notice for further improvement.

NOTE

We cannot supply PWB with component parts in principle. When a circuit on PWB has failure, please repair it by component parts base. Parts which are not mentioned in service manual are not supplied.

COMPONENTS

PS-2429D-A/PS-2429D-B

Main unit - - - - - 1

To engineers in charge of repair or inspection of our products.

Before repair or inspection, make sure to follow the instructions so that customers and Engineers in charge of repair or inspection can avoid suffering any risk or injury.

1. Use specified parts.

The system uses parts with special safety features against fire and voltage. Use only parts with equivalent characteristics when replacing them.

The use of unspecified parts shall be regarded as re-modeling for which we shall not be liable. The onus of product liability (PL) shall not be our responsibility in cases where an accident or failure is as a result of unspecified parts being used.

2. Place the parts and wiring back in their original positions after replacement or re-wiring.
For proper circuit construction, use of insulation tubes, bonding, gaps to PWB, etc, is involved. The wiring connection and routing to the PWB are specially planned using clamps to keep away from heated and high voltage parts. Ensure that they are placed back in their original positions after repair or inspection.
If extended damage is caused due to negligence during repair, the legal responsibility shall be with the repairing company.
3. Check for safety after repair.
Check that the screws, parts and wires are put back securely in their original position after repair. Ensure for safety reasons there is no possibility of secondary problems around the repaired spots.
If extended damage is caused due to negligence of repair, the legal responsibility shall be with the repairing company.
4. Caution in removal and making wiring connection to the parts for the automobile.
Disconnect the battery terminal after turning the ignition key off. If wrong wiring connections are made with the battery connected, a short circuit and/or fire may occur. If extensive damage is caused due to negligence of repair, the legal responsibility shall be with the repairing company.
5. Cautions regarding chips.
Do not reuse removed chips even when no abnormality is observed in their appearance. Always replace them with new ones. (The chip parts include resistors, capacitors, diodes, transistors, etc). The negative pole of tantalum capacitors is highly susceptible to heat, so use special care when replacing them and check the operation afterwards.
6. Cautions in handling flexible PWB
Before working with a soldering iron, make sure that the iron tip temperature is around 270 . Take care not to apply the iron tip repeatedly (more than three times) to the same patterns. Also take care not to apply the tip with force.
7. Turn the unit OFF during disassembly and parts replacement. Recheck all work before you apply power to the unit.
8. Cautions in checking that the optical pickup lights up.
The laser is focused on the disc reflection surface through the lens of the optical pickup. When checking that the laser optical diode lights up, keep your eyes more than 30cms away from the lens. Prolonged viewing of the laser within 30cms may damage your eyesight.
9. Cautions in handling the optical pickup
The laser diode of the optical pickup can be damaged by electrostatic charge caused by your clothes and body. Make sure to avoid electrostatic charges on your clothes or body, or discharge static electricity before handling the optical pickup.
- 9-1. Laser diode
The laser diode terminals are shorted for transportation in order to prevent electrostatic damage. After replacement, open the shorted circuit. When removing the pickup from the mechanism, short the terminals by soldering them to prevent this damage.

9-2. Actuator

The actuator has a powerful magnetic circuit. If a magnetic material is put close to it, its characteristics will change. Ensure that no foreign substances enter through the ventilation slots in the cover.

9-3. Cleaning the lens

Dust on the optical lens affects performance. To clean the lens, apply a small amount of isopropyl alcohol to lens paper and wipe the lens gently.

DIFFERENCE THE MODEL

PS-2429D-A

CD mechanism 929-0069-04

Please refer to the original service manual.

EXPLODED VIEW · PARTS LIST	page 8,9,10
ELECTRICAL PARTS LIST	page 13
CIRCUIT DIAGRAM	page 18
PRINTED WIRING BOARD	page 19

PS-2429D-B

CD mechanism 929-0092-82

Please refer to this service manual.

EXPLODED VIEW · PARTS LIST	page 7,8
ELECTRICAL PARTS LIST	page 9 (the left side)
CIRCUIT DIAGRAM	page 10
PRINTED WIRING BOARD	page 9 (the right side)

ADJUSTMENT

Item	Procedure	Measuring instrument
FM noise convergence	<ol style="list-style-type: none"> 1. Input the 98.1MHz/55dB μ (400Hz, 30% MOD, 22.5kHz Div.) SSG signal. 2. Set the output to 0dBm(0.775V) by main volume. 3. Adjust VR101 so that the output level is -18 ± 1dB when the output of SSG is set to -20dB μ. 	SSG Milli-volt meter
FM SD	<ol style="list-style-type: none"> 1. Turn off the power switch and on the FM/AM button, while holding the buttons of CH1 and CH3 to make the unit the test mode. ("FM SD" indicator of LCD display appears.) 2. Input the 98.1MHz, 24dB μ (400Hz, 30% MOD, 22.5kHz Div.) SSG signal. 3. Adjust the "FM SD" indicator of LCD display to appear at the 24dB μ and to blink at the 21dB μ by VR103. 	SSG
AM SD	<ol style="list-style-type: none"> 1. After FM SD adjustment, turn on the FM/AM button. ("AM SD" indicator of LCD display appears.) 2. Input the 1000kHz, 32dB μ (400Hz, 30% MOD) SSG signal. 3. Adjust the "AM SD" indicator of LCD display to appear at the 32dB μ and to blink at the 31dB μ by VR105. 	SSG
Clock accuracy	<ol style="list-style-type: none"> 1. Set a universal timer to TP101(BEEP), adjust TC101 so that a reading of the meter is 0.5 ~ 1.0 sec./day. 	Chronometer

EXPLODED VIEW • PARTS LIST

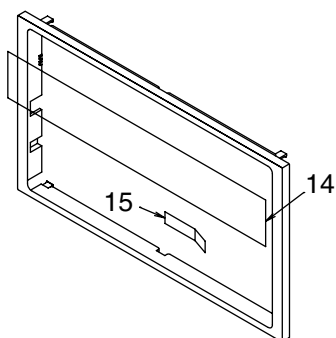
Escutcheon section

Please refer to page 5 of the original service manual.

The following parts are changed in the parts list as well as the original model.

NO.	PART NO.	DESCRIPTION	Q'TY
1	940-7928-25	ESCUTCHEON ASSY	1
13	383-0674-00	FACE PANEL	1

The following parts are added in the parts list.



NO.	PART NO.	DESCRIPTION	Q'TY
14	347-5792-00	INSULATOR	1
15	290-4537-43	LABEL	1

The other parts of PS-2429D are the same as PS-2375D.

Main section

Please refer to page 6, 7 of the original service manual.

The following parts are changed in the parts list as well as the original model.

NO.	PART NO.	DESCRIPTION	Q'TY
38	353-0537-00	SHADE	2
41	854-8213-02	EXTENSION LEAD	1

The following parts are removed in the parts list as well as the original model.

NO.	PART NO.	DESCRIPTION	Q'TY
29	345-8455-01	CUSHION RUBBER	1
37	347-5206-00	SHADE	1

The following parts are different from the original model.

NO.	PART NO.	DESCRIPTION	Q'TY
1	310-1639-20	UPPER CASE(2429D-B)	1
2	311-1727-24	LOWER CASE(2429D-B)	1
5	309-0698-20	FRONT PLATE(2429D-B)	1
6	331-2275-20	MECHANISM BRACKET (2429D-B)	1
7	331-2281-21	MECHANISM BRACKET (FRONT)(2429D-B)	1
8	331-2282-20	MECHANISM BRACKET(REAR)(2429D-B)	1
9	307-0597-21	REAR PLATE(2429D-B)	1
15	929-0092-82	CD MECHANISM(2429D-B)	1
34	854-4376-50	EXTENSION LEAD(2429D-B)	1
36	286-9497-00	SETPLATE	1
41	854-8213-52	EXTENSION LEAD(2429D-B)	1

The part of No.39 in the parts list is not used of PS-2429D.

The other parts of PS-2429D are the same as PS-2375D.

ELECTRICAL PARTS LIST

Main PWB section(B1)

Please refer to page 11, 12 of the original service manual.

The following parts are different from the original model.

The parts with mark are replaced from JW on the original model.

REF No.	PART No.	DESCRIPTION	REF No.	PART No.	DESCRIPTION	REF No.	PART No.	DESCRIPTION
C158	178-3332-78	0.033 μ F	R304	117-3321-10	1/10W 3.3k	R330	117-2221-10	1/10W 2.2k
C159	178-3332-78	0.033 μ F	R307	117-3321-10	1/10W 3.3k	R358	117-2731-10	1/10W 27k
C254	178-2732-78	0.027 μ F	R308	117-1031-10	1/10W 10k	R359	117-2731-10	1/10W 27k
C306	178-1032-78	0.01 μ F	R309	117-1031-10	1/10W 10k	R360	117-6831-10	1/10W 68k
C307	178-1032-78	0.01 μ F	R312	117-3321-10	1/10W 3.3k	R361	117-6831-10	1/10W 68k
C330	178-4742-78	0.47 μ F	R315	117-3321-10	1/10W 3.3k	R362	117-2721-10	1/10W 2.7k
C331	178-2742-78	0.27 μ F	R321	117-2221-10	1/10W 2.2k	R363	117-2721-10	1/10W 2.7k
C332	178-4742-78	0.47 μ F	R322	117-2221-10	1/10W 2.2k			
C333	178-2742-78	0.27 μ F	R326	117-2221-10	1/10W 2.2k			

The following parts are added in the parts list.

REF No.	PART No.	DESCRIPTION	REF No.	PART No.	DESCRIPTION	REF No.	PART No.	DESCRIPTION
C308	183-4763-31	16V47 μ F	C366	178-2722-78	2700pF	R338	117-1511-10	1/10W 150
C313	184-2273-21	10V220 μ F	C367	178-2722-78	2700pF	R339	117-1511-10	1/10W 150
C314	178-3322-78	3300pF	IC301	051-3019-90	NJM2060V	R340	117-1511-10	1/10W 150
C315	178-3322-78	3300pF	IC303	051-3019-90	NJM2060V	R341	117-1511-10	1/10W 150
C316	178-3942-78	0.39 μ F	IC304	051-3019-90	NJM2060V	R342	117-1541-10	1/10W 150k
C317	178-2242-78	0.22 μ F	R316	117-1021-10	1/10W 1k	R343	117-1541-10	1/10W 150k
C318	178-2242-78	0.22 μ F	R317	117-1021-10	1/10W 1k	R344	117-1541-10	1/10W 150k
C319	178-3942-78	0.39 μ F	R318	117-1541-10	1/10W 150k	R345	117-1541-10	1/10W 150k
C322	178-2242-78	0.22 μ F	R319	117-1541-10	1/10W 150k	R346	117-5131-10	1/10W 51k
C323	178-2242-78	0.22 μ F	R320	117-1541-10	1/10W 150k	R347	117-5131-10	1/10W 51k
C324	178-6845-79	0.68 μ F	R323	117-1541-10	1/10W 150k	R348	117-5131-10	1/10W 51k
C325	178-6845-79	0.68 μ F	R324	117-1511-10	1/10W 150	R349	117-5131-10	1/10W 51k
C326	178-5622-78	5600pF	R325	117-1511-10	1/10W 150	R350	117-1031-10	1/10W 10k
C327	178-2732-78	0.027 μ F	R327	117-2711-10	1/10W 270	R351	117-1031-10	1/10W 10k
C328	178-5622-78	5600pF	R328	117-1511-10	1/10W 150	R352	117-1031-10	1/10W 10k
C329	178-2732-78	0.027 μ F	R329	117-2711-10	1/10W 270	R353	117-1031-10	1/10W 10k
C334	178-4742-78	0.47 μ F	R331	117-2711-10	1/10W 270	R354	117-1221-10	1/10W 1.2k
C335	178-4742-78	0.47 μ F	R332	117-1511-10	1/10W 150	R355	117-1221-10	1/10W 1.2k
C336	178-2742-78	0.27 μ F	R333	117-2711-10	1/10W 270	R356	117-1231-10	1/10W 12k
C337	178-2742-78	0.27 μ F	R334	117-5611-10	1/10W 560	R357	117-1231-10	1/10W 12k
C347	178-1242-78	0.12 μ F	R335	117-5611-10	1/10W 560	R379	117-1831-10	1/10W 18k
C364	183-4763-31	16V47 μ F	R336	117-1821-10	1/10W 1.8k	R404	111-2291-91	1/4WS 2.2
C365	178-1242-78	0.12 μ F	R337	117-1821-10	1/10W 1.8k	R405	117-1831-10	1/10W 18k

The following parts are removed in the parts list.

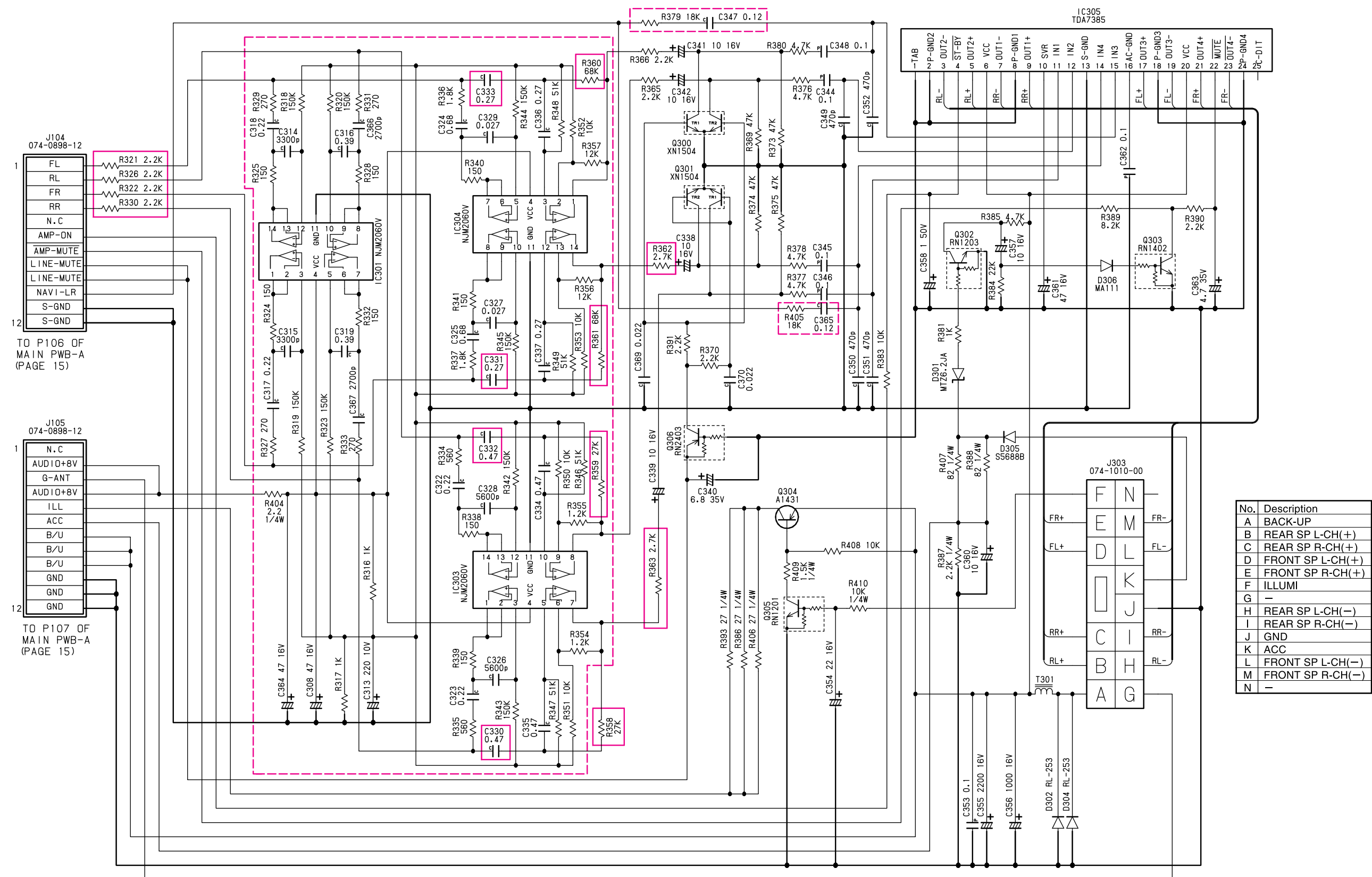
REF No.	PART No.	DESCRIPTION	REF No.	PART No.	DESCRIPTION
C309	117-0000-00	1/10W 0 JW	R310	117-2241-10	1/10W 220k
C310	117-0000-00	1/10W 0 JW	R311	117-2241-10	1/10W 220k

The other parts of PS-2429D are the same as PS-2375D.

CIRCUIT DIAGRAM

Main PWB-B section(B1)

Please refer to page 17 of the original service manual.
The following circuit is the different parts.



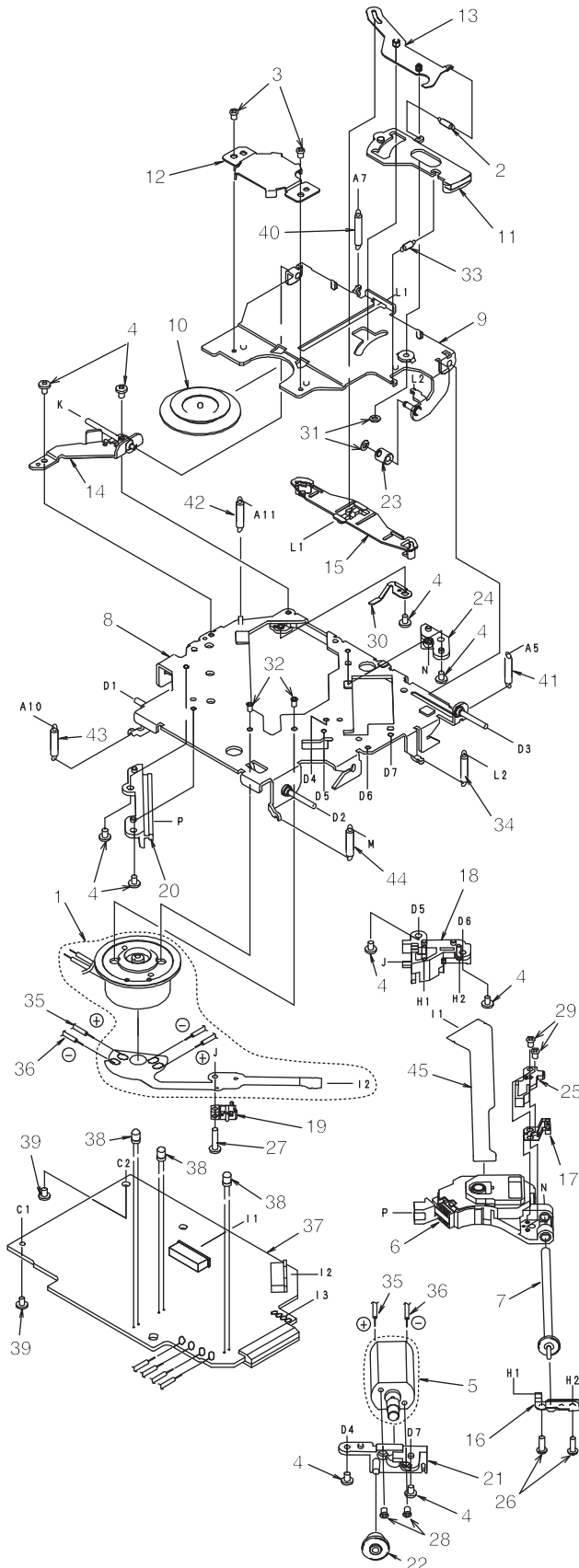
DIFFERENCE THE DESCRIPTION OF THE PARTS
ADDITION THE PARTS

Please refer to page 15 of the original service manual.
The following circuit is the different parts.



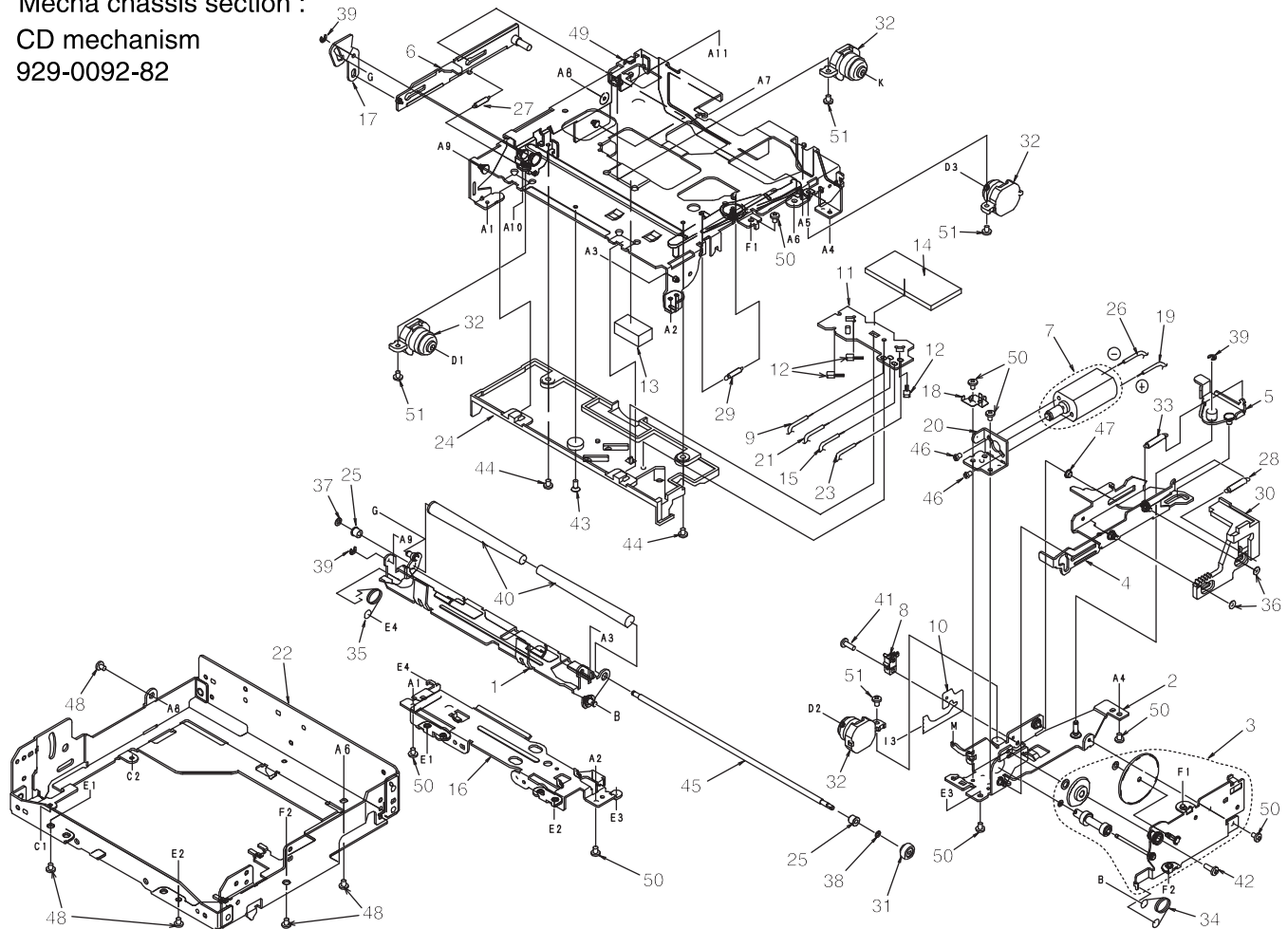
EXPLODED VIEW • PARTS LIST

Drive unit section : CD mechanism 929-0092-82



NO.	PART NO.	DESCRIPTION	Q'TY
1	SMA-151-100	MOTOR ASSY(SPINDLE)	1
2	750-3098-00	L-LINK SPRING	1
3	716-1468-00	SCREW(M2 × 2.5)	2
4	714-2003-81	SCREW(M2 × 3)	10
5	SMA-146-100	MOTOR ASSY(SLED)	1
6	969-0008-00	PICK UP UNIT	1
7	HBS-432-100	LS-GEAR ASSY	1
8	966-0447-07	DR-PLATE-ASSY	1
9	966-0449-04	CLAMP-LINK-ASSY	1
10	621-0205-02	CLAMPER RING	1
11	621-0251-03	LOCK LINK	1
12	620-0198-03	CLAMPER PLATE	1
13	966-0314-01	STOP LINK-ASSY	1
14	966-0448-01	SIDE PLATE-ASSY	1
15	621-0252-03	DISC STOPPER	1
16	620-0491-03	SPRING PLATE	1
17	966-0454-00	SCREW H-RACK-ASSY	1
18	621-0358-02	LS-HOLDER-F	1
19	013-7100-00	SWITCH(LIMIT)	1
20	621-0357-03	PICK UP GUIDE	1
21	621-0253-02	MOTOR HOLDER	1
22	621-0255-02	SECOND GEAR	1
23	622-1073-02	CLAMPER ROLLER	1
24	621-0359-02	LS-HOLDER-R	1
25	621-0375-00	SH-BASE	1
26	716-0675-00	SCREW(M2 × 5.5)	2
27	716-1555-00	WAVE SCREW(Φ2 × 8)	1
28	732-2004-11	SEMS SCREW(M2 × 4)	2
29	739-1735-17	PRECISION SCREW(M1.7 × 3.5)	2
30	620-0690-01	RATTLE PLATE	1
31	746-0761-00	WASHER	2
32	716-1733-00	SCREW(M1.7 × 2.3)	2
33	750-3099-00	ES-SPRING	1
34	750-3097-03	CLAMPER SPRING	1
35	816-2373-00	LEAD WIRE(WHT)	1
36	816-2372-00	LEAD WIRE(BLU)	1
37	039-1732-01	MECHANISM PWB(WITHOUT COMPONENT)	1
38	001-0563-00	LED	3
39	716-1670-00	SCREW(M2 × 4)	2
40	750-3202-00	CENTER SPRING-B	1
41	750-3096-01	DR-SPRING R	1
42	750-3164-00	DR-SPRING LR	1
43	750-3188-00	DR-SPRING F-B	1
44	750-3201-00	DR-SPRING F-R	1
45	039-1587-00	FPC(WITHOUT COMPONENT)	1

Mecha chassis section :
CD mechanism
929-0092-82

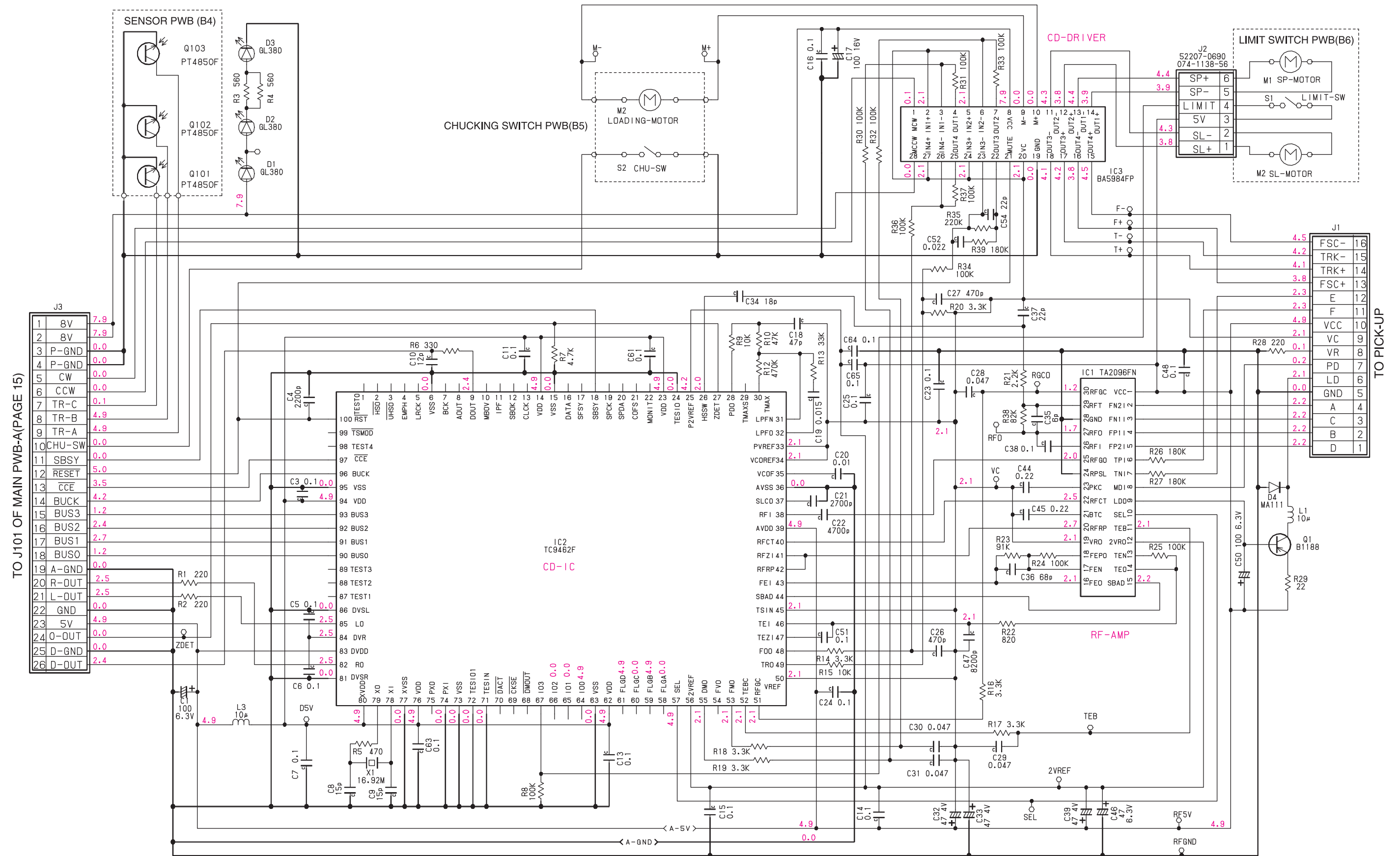


NO.	PART NO.	DESCRIPTION	Q'TY
1	966-0309-05	L-DISC-G-ASSY	1
2	966-0310-06	SHIFT-P-CH-ASSY	1
3	HBS-430-100	GEAR PLATE ASSY	1
4	966-0312-06	SHIFT-PLATE-ASSY	1
5	966-0358-01	DRIVE-L-PLATE-ASSY	1
6	966-0359-03	SIDE-L-PLATE-ASSY	1
7	SMA-147-100	MOTOR ASSY(LOADING)	1
8	013-3879-01	CHUCKING SWITCH	1
9	804-4910-60	VINYL-COAT-WIRE(YEL)	1
10	039-0586-01	CHUCKING SWITCH PWB (WITHOUT COMPONENT)	1
11	039-0588-01	SENSOR PWB (WITHOUT COMPONENT))	1
12	060-0252-01	PHOTO-TR	3
13	345-7513-01	CLAMPER SHEET	1
14	345-7514-00	SENSOR PWB SHEET	1
15	802-4910-60	VINYL-COAT-WIRE(RED)	1
16	620-0485-04	FRONT PLATE	1
17	620-0488-01	S-L-LINK PLATE	1
18	620-0489-02	MOTOR PLATE	1
19	802-4904-60	VINYL-COAT-WIRE(RED)	1
20	620-0492-01	MOTOR BRACKET	1
21	801-4910-60	VINYL-COAT-WIRE(BRN)	1
22	620-0773-01	CD-MECH-BRKT	1
23	800-4910-60	VINYL-COAT-WIRE(BLK)	1
24	621-0402-02	U-DISC GUIDE-F	1
25	621-0243-02	ROLLER SLEEVE	2

NO.	PART NO.	DESCRIPTION	Q'TY
26	800-4904-60	VINYL-COAT-WIRE(BLK)	1
27	750-3189-00	SIDE-L-SPRING	1
28	750-3098-00	L-LINK SPRING	1
29	750-3094-00	S-ARM SPRING	1
30	621-0248-07	RACK GEAR	1
31	621-0249-02	ROLLER GEAR	1
32	629-0074-00	DAMPER	4
33	750-3092-03	SHIFT SPRING	1
34	750-3091-03	ROADING-SPRING-R	1
35	750-3090-02	ROADING-SPRING-L	1
36	746-0877-02	WASHER	2
37	746-0762-00	WASHER	1
38	746-0712-03	WASHER	1
39	743-1500-10	E-RING	3
40	621-0258-03	LOADING ROLLER	2
41	716-1742-00	SCREW(M2 × 5)	1
42	716-1704-00	SCREW(M2 × 7)	1
43	716-1677-00	SCREW(M2 × 5)	1
44	716-1507-00	SCREW(M2 × 3)	2
45	622-1072-05	ROLLER SHAFT	1
46	716-1468-00	SCREW(M2 × 2.5)	2
47	622-1219-01	SHIFT ROLLER	1
48	714-2603-81	SCREW(M2.6 × 3)	5
49	966-0308-11	CHASSIS ASSY	1
50	714-2003-81	SCREW(M2 × 3)	8
51	716-1670-00	SCREW(M2 × 4)	4

CIRCUIT DIAGRAM

CD mechanism section(B3,4,5,6) 929-0092-82



■ ELECTRICAL PARTS LIST

Mechanism PWB section(B3) : CD mechanism 929-0092-82

REF No.	PART No.	DESCRIPTION	REF No.	PART No.	DESCRIPTION	REF No.	PART No.	DESCRIPTION
C1	163-1073-10	6.3V100 μ F	C36	176-6801-00	68pF CH	R8	117-1041-10	1/10W 100k Ω
C3	178-1042-78	0.1 μ F	C37	176-2201-00	22pF CH	R9	117-1031-10	1/10W 10k Ω
C4	178-2222-78	2200pF	C38	178-1042-78	0.1 μ F	R10	117-4731-10	1/10W 47k Ω
C5	178-1042-78	0.1 μ F	C39	163-4763-05	4V47 μ F	R12	117-4741-10	1/10W 470k Ω
C6	178-1042-78	0.1 μ F	C44	178-2242-78	0.22 μ F	R13	117-3331-10	1/10W 33k Ω
C7	178-1042-78	0.1 μ F	C45	178-2242-78	0.22 μ F	R14	117-3321-10	1/10W 3.3k Ω
C8	176-1501-00	15pF CH	C46	163-4763-10	6.3V47 μ F	R15	117-1031-10	1/10W 10k Ω
C9	176-1501-00	15pF CH	C47	178-8222-78	8200pF	R16	117-3321-10	1/10W 3.3k Ω
C10	176-1201-00	12pF CH	C48	178-1042-78	0.1 μ F	R17	117-3321-10	1/10W 3.3k Ω
C11	178-1042-78	0.1 μ F	C50	163-1073-10	6.3V100 μ F	R18	117-3321-10	1/10W 3.3k Ω
C13	178-1042-78	0.1 μ F	C51	178-1042-78	0.1 μ F	R19	117-3321-10	1/10W 3.3k Ω
C14	178-1042-78	0.1 μ F	C52	178-2232-78	0.022 μ F	R20	117-3321-10	1/10W 3.3k Ω
C15	178-1042-78	0.1 μ F	C54	176-2201-00	22pF CH	R21	117-2221-10	1/10W 2.2k Ω
C16	178-1042-78	0.1 μ F	C61	178-1042-78	0.1 μ F	R22	117-8211-10	1/10W 820 Ω
C17	163-1073-31	16V100 μ F	C63	178-1042-78	0.1 μ F	R23	117-9131-10	1/10W 91k Ω
C18	176-4701-00	47pF CH	C64	178-1042-78	0.1 μ F	R24	117-1041-10	1/10W 100k Ω
C19	178-1532-78	0.015 μ F	C65	178-1042-78	0.1 μ F	R25	117-1041-10	1/10W 100k Ω
C20	178-1032-78	0.01 μ F	D4	001-0516-00	MA111	R26	117-1841-10	1/10W 180k Ω
C21	178-2722-78	2700pF	IC1	051-5704-00	TA2096FN	R27	117-1841-10	1/10W 180k Ω
C22	178-4722-78	4700pF	IC2	051-6342-00	TC9462F	R28	117-2211-10	1/10W 220 Ω
C23	178-1042-78	0.1 μ F	IC3	051-6045-08	BA5984FP	R29	117-2201-10	1/10W 22 Ω
C24	178-1042-78	0.1 μ F	J1	074-1138-66	16P	R30	117-1041-10	1/10W 100k Ω
C25	178-1042-78	0.1 μ F	J2	074-1138-06	6P	R31	117-1041-10	1/10W 100k Ω
C26	178-4712-78	470pF	L1	010-2155-93	10 μ H	R32	117-1041-10	1/10W 100k Ω
C27	178-4712-78	470pF	L3	010-2199-74	10 μ H J	R33	117-1041-10	1/10W 100k Ω
C28	178-4732-78	0.047 μ F	Q1	101-1188-50	2SB1188PQR	R34	117-1041-10	1/10W 100k Ω
C29	178-4732-78	0.047 μ F	R1	117-2211-10	1/10W 220 Ω	R35	117-2241-10	1/10W 220k Ω
C30	178-4732-78	0.047 μ F	R2	117-2211-10	1/10W 220 Ω	R36	117-1041-10	1/10W 100k Ω
C31	178-4732-78	0.047 μ F	R3	117-5611-10	1/10W 560 Ω	R37	117-1041-10	1/10W 100k Ω
C32	163-4763-05	4V47 μ F	R4	117-5611-10	1/10W 560 Ω	R38	117-8231-10	1/10W 82k Ω
C33	163-4763-05	4V47 μ F	R5	117-4711-10	1/10W 470 Ω	R39	117-1841-10	1/10W 180k Ω
C34	176-1801-00	18pF CH	R6	117-3311-10	1/10W 330 Ω	X1	061-3500-90	16.920MHz
C35	176-6097-00	6pF CH	R7	117-4721-10	1/10W 4.7k Ω			

Sensor PWB section(B4) : CD mechanism 929-0092-82

REF No.	PART No.	DESCRIPTION	REF No.	PART No.	DESCRIPTION	REF No.	PART No.	DESCRIPTION
Q101	060-0252-01	PT4850F	Q102	060-0252-01	PT4850F	Q103	060-0252-01	PT4850F

Chuckling switch PWB section(B5) : CD mechanism 929-0092-82

REF No.	PART No.	DESCRIPTION
S2	013-3879-01	SPPB12

Limit switch PWB section(B6) : CD mechanism 929-0092-82

REF No.	PART No.	DESCRIPTION
S1	013-7100-00	SPPB11

■ PRINTED WIRING BOARD

CD mechanism section(B3,4,5,6) 929-0092-82

